

Password Reset functionality through Internet Banking Application

देना बँक
DENA BANK
(A Govt. of India Enterprise)
Trusted Family Bank

Dena iConnect

Internet Banking Login

User ID

Password

Submit

First Time Login : Click [here](#) to set your passwords.
Forgot Password : Click [here](#) to re-set your passwords.

[Terms of Use](#) | [Privacy Statement](#) | [Disclaimer](#)

This site chose VeriSign SSL for secure e-commerce and confidential communications.

ABOUT SSL CERTIFICATES

Done Local intranet 100%

ReSet Your Passwords-User Details - Windows Internet Explorer

https://www.denaconnect.co.in/corp/BANKAWAY;jsessionid=0000iwkJKx827fhg1acRJroeXiw-1?bwayparam=ujz1KSv

File Edit View Favorites Tools Help

ReSet Your Passwords-User Details

देना बँक
DENA BANK
(A Govt. of India Enterprise)
Trusted Family Bank

Dena iConnect
For All CBS Core Banking Branches

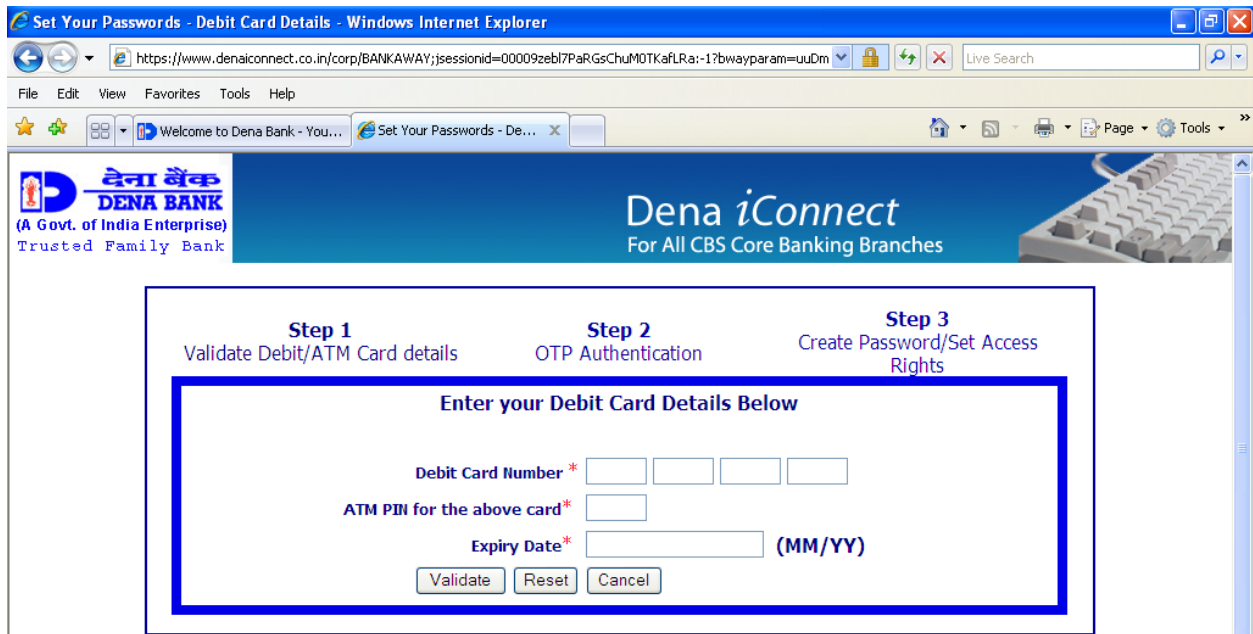
Enter your Details Below

User ID *

Account Number *

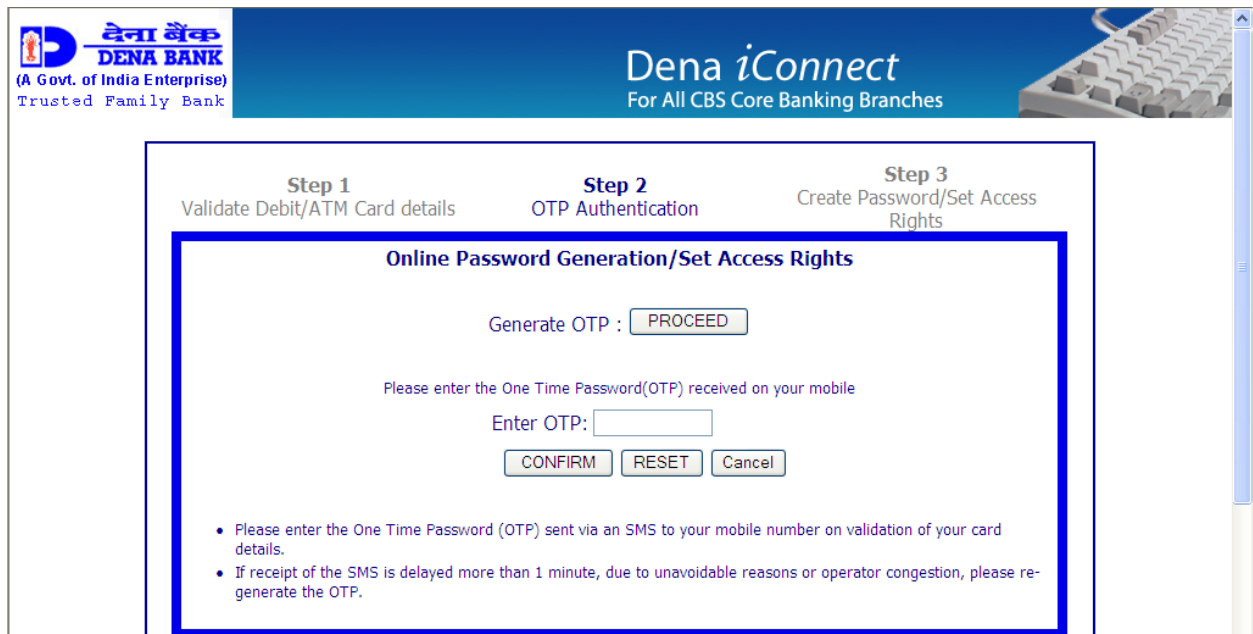
Submit Reset Cancel

Enter your existing internet banking user id and your account number for validation and click on submit button to proceed further. If you feel you have entered the details wrongly then click on Rest button to clear the fields. To stop the operation click on the cancel button.



Enter your card details (ATM cum DEBIT Card / Insta Card / Gold Card)
Debit Card Number: The 16 digit number printed on your card.
ATM PIN: 4 digit PIN that is used on ATMs to withdraw Cash
Expiry Date: Date Printed on the card in MM/YY format.

Click on validate to go further, reset button to clear all the fields and cancel to stop the action.



Click on the PROCEED button to generate the One Time Password (OTP). This OTP will be sent to the registered mobile number in FINACLE. On correct entry of the OTP click on Confirm to proceed further.

The screenshot shows the Dena iConnect interface for online password generation. The header includes the Dena Bank logo and the text "Dena iConnect For All CBS Core Banking Branches". The interface is divided into three steps: Step 1 (Validate Debit/ATM Card details), Step 2 (OTP Authentication), and Step 3 (Create Password/Set Access Rights). The Step 3 section is highlighted with a blue border and contains the following elements:

- Online Password Generation/Set Access Rights**
- Create Login Password**
- New Password**
- ReType New Password**
- Create Transaction Password**
- New Password**
- ReType New Password**
- Confirm** **Reset** **Cancel**

Click on the checkbox for either setting login or transaction password or click on both to create both the passwords.

The screenshot shows the Dena iConnect interface displaying a success message. The header includes the Dena Bank logo and the text "Dena iConnect For All CBS Core Banking Branches". The main content area is highlighted with a blue border and contains the following text:

**Your Password has been Successfully set.
Please Click OK to go to Login Page.**

OK

At the bottom of the page, there are links for [Terms of Use](#), [Privacy Statement](#), and [Disclaimer](#).

On successful creation you will be guided to the screen as shown above and the new passwords are to be used for login to internet banking application